

DESCRIPTION

LT25 STAINLESS STL CLOSE COUPLED MOTOR PUMP ASSY

REF. NO.

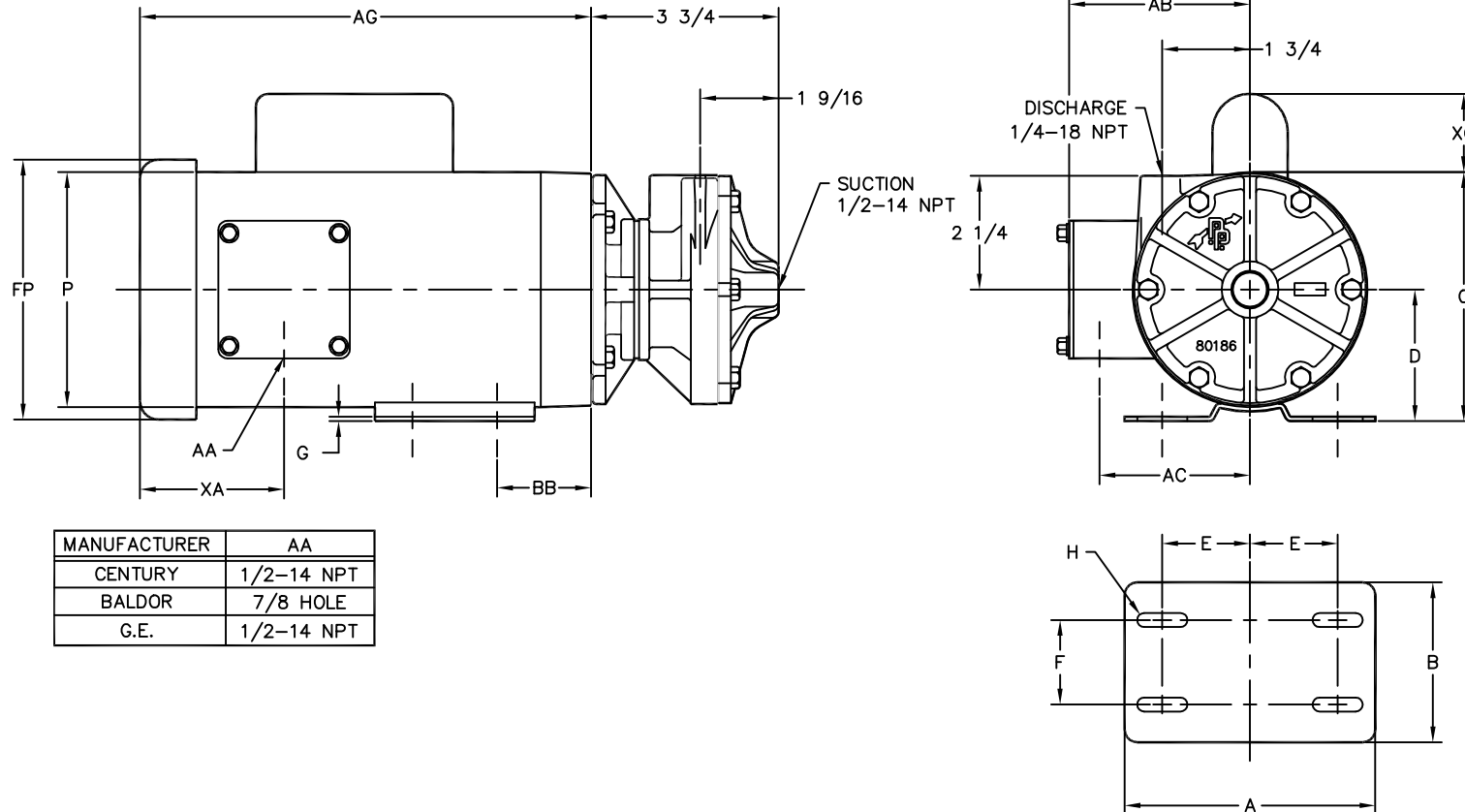
O-LT25HS

DATE

4-23-91

REV.

B



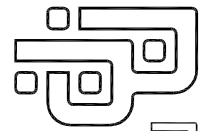
MANUFACTURER	AA
CENTURY	1/2-14 NPT
BALDOR	7/8 HOLE
G.E.	1/2-14 NPT

MOTOR FRAME DIMENSIONS

P/N	TYPE	PH	MANUFACTURE	A	B	D	E	F	G	H (SLOT)	O	P	AB	AC	AG	BB	FP	XA	XO	
1438	OPEN, DRIP PROOF	1/60	CENTURY	5 11/16	3 1/2	3	2 1/8	2 3/4	5/64	1 x 11/32	5 13/16	5 5/8	N/A	1 1/8	8	2 5/16	N/A	1 1/16	2	
1608	TOTALLY-ENCLOSED	1/60	BALDOR	5	3 3/16	2 5/8	1 3/4	1 11/16	1/8	1 x 9/32	5	4 11/16	4 1/16	3	8	1 7/8	5 3/16	2 7/8	1 9/16	
1439	TOTALLY-ENCLOSED	1/60	BALDOR												9 5/16					N/A
1440	TOTALLY-ENCLOSED	3/60	BALDOR												N/A					N/A
1441	EXPLOSION PROOF	1/60	G.E.	5 5/8	3 5/8	3	2 1/8	2 3/4	1/8	1 x 11/32	5 13/16	6 5/8	N/A	1 3/8	9 5/8	2 1/8	N/A	1/2	N/A	
1442	EXPLOSION PROOF	3/60	G.E.												9 1/4					

NOTES:

1. MOTOR FRAMES WILL VARY IN LOOK, PER MANUFACTURER.
2. CENTURY AND G.E. MOTORS ARE MANUFACTURED WITH 48 TYPE FRAME WITH 42C FACE, BALDOR IS 42 TYPE FRAME WITH 42C FACE.
3. MOTOR P/N INDICATES PRICE PUMP CO. PART NUMBER, AND HAS NO SIMILARITY WITH MANUFACTURER PART NUMBERS.
4. ALL DIMENSIONS HAVE BEEN ROUNDED TO THE NEAREST 1/8 INCH.



PRICE PUMP CO.

FACTORY FAX TRANSMITTAL DRAWING

#1 Pump Way P.O. Box Q
 Sonoma, CA 95476 (707) 938-8441
 707-FAX 938-0764